

BOLE DK Series Two Platen Hybrid Injection Molding Machine

MODEL: BL1300DK/Z12000

Measure Unit A B C

Injection Unit:

DESCRIPTION	UNIT	BL1300DK/Z12000		
Screw diameter	in	4.33	4.72	5.12
	mm	110	120	130
Screw ratio		23	23	23
Theoretical injection capacity	cu in	336	400	470
	cm ³	5512	6560	7698
Shot weight(PS)	g	5071	6035	7083
	oz	179	213	250
Injection piston speed	in/s	4.35		
	mm/s	111		
Injection rate	cu in/s	64.1	76.3	89.5
	cm ³ /s	1050	1250	1467
	g/s	966	1150	1350
Injection pressure	psi	31717	26651	22708
	Mpa	219	184	157
Max. Screw speed	r/min	105		

Clamping Unit:

Clamping force	US Ton	1461
	kN	13000
Platen dimension	in x in	79.53 x 75.59
	mm x mm	2130 x 2030
Space between tie bar	in x in	55.9 x 51.97
	mm x mm	1420x1320
Opening stroke	in	86.6/59
	mm	2200/1500
Min. mold height	in	25.6
	mm	650
Max. mold height	in	53.1
	mm	1350
Max. daylight	in	112.2
	mm	2850
Ejector stroke	in	14.2
	mm	360
Ejector force forward	US Tons	35
	kN	309
Ejector force back	US Ton	24
	kN	210
Number of Ejector bar	PC	25

BOLE DK Series Two Platen Hybrid Injection Molding Machine
MODEL: BL1300DK/Z12000

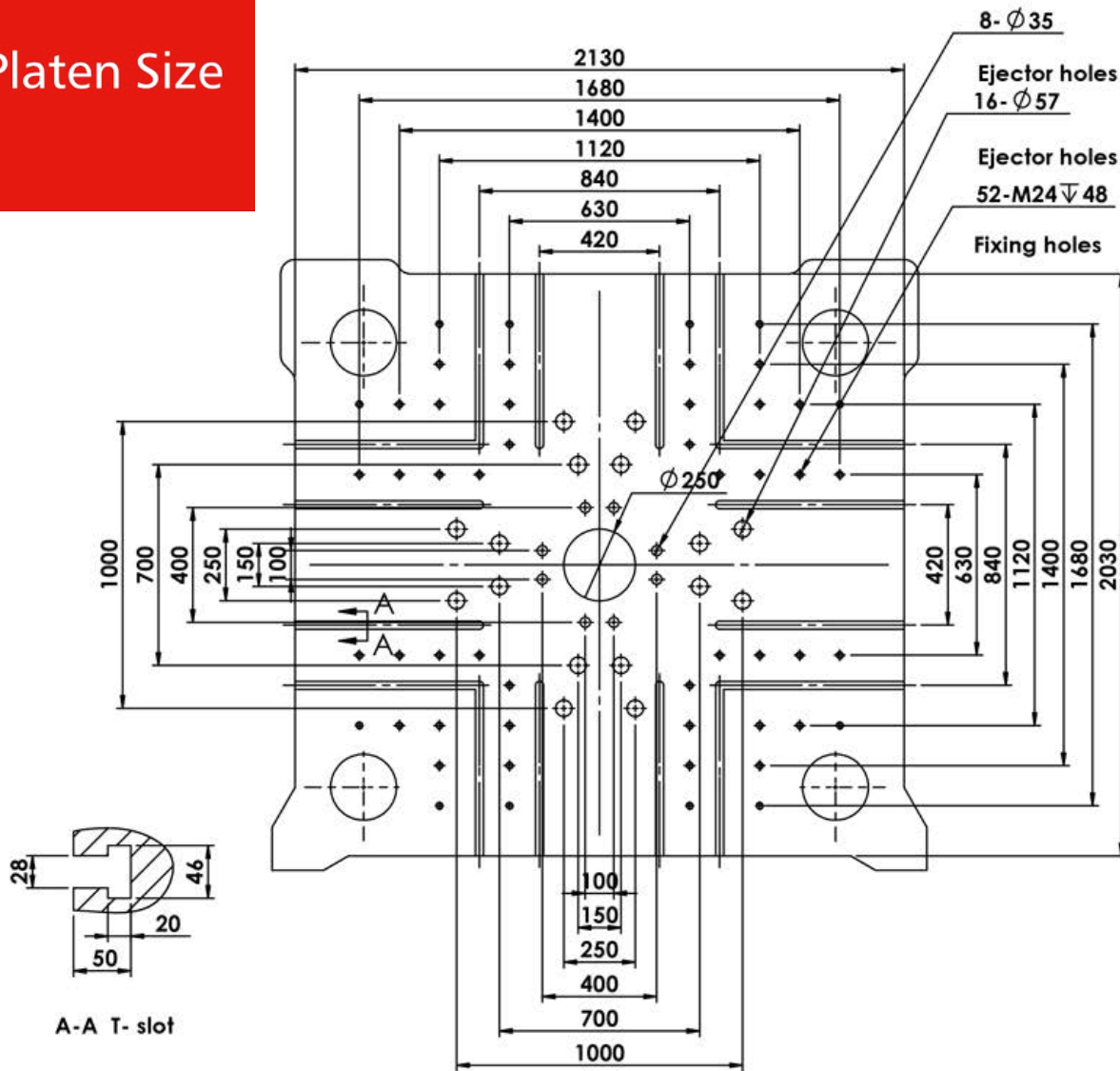
Measure Unit A B C

Other Machine Information:

Heater power	kW	72	75	87
Pump Motor	hp	63+63+63		
	kW	47+47+47		
System Pressure	PSI	2538/3046		
	MPa	17.5/21		
Dry cycle time/stroke(EUROMAP 6)	s/mm	4.8/994		
Oil reservoir capacity	Gal	528		
	L	2000		
Max. mold weight	lbs	46297		
	kg	21000		
Net weight	Lbs	150000		
	Ton	75		
Machine size(LxWxH)	ft x ft x ft	36.09 x 12.47 x 11.15		
	m×m×m	11.0×3.8×3.4		

BOLE DK Series Two Platen Hybrid Injection Molding Machine
 MODEL: BL1300DK/Z12000

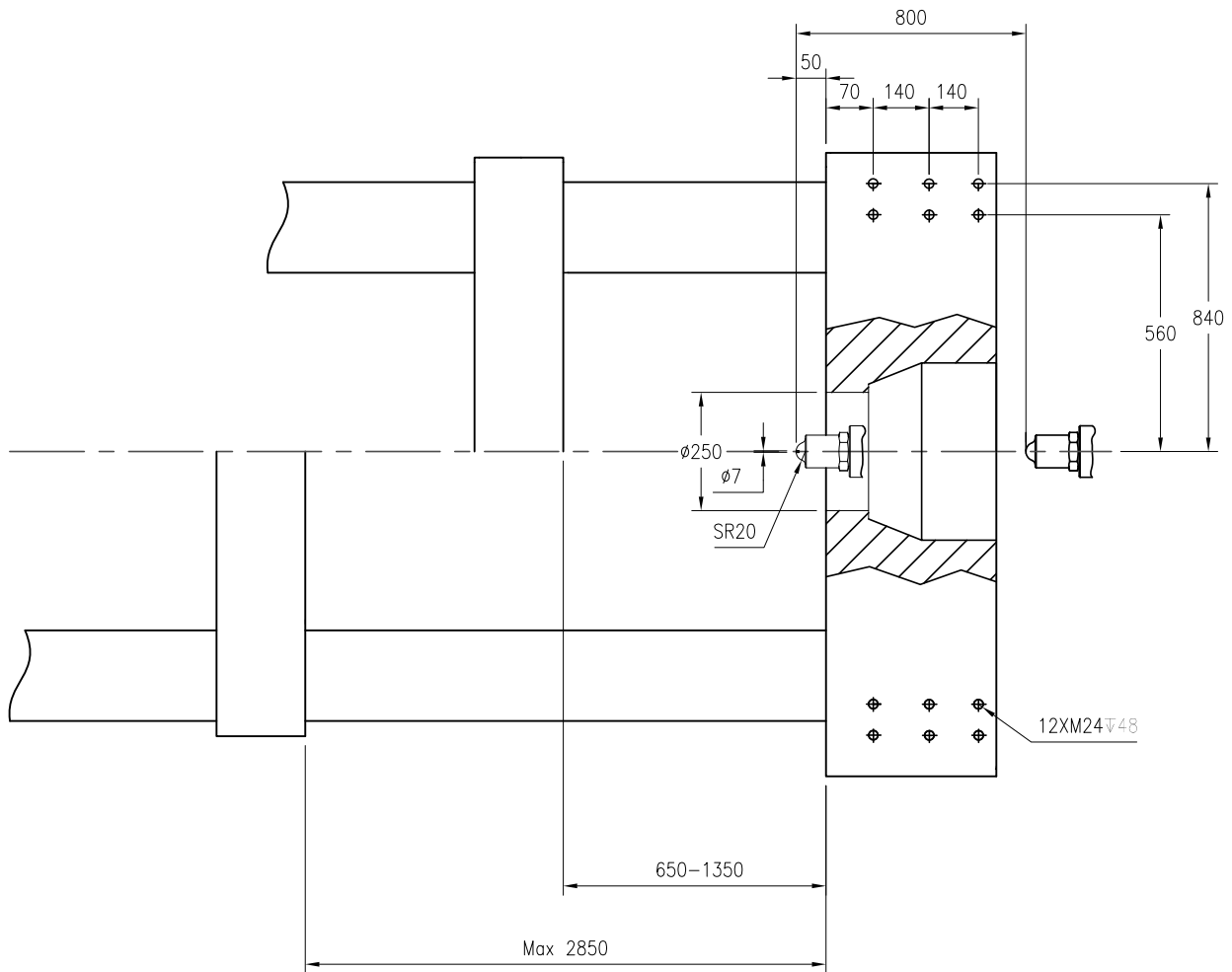
Platen Size



BL1300DK

BOLE DK Series Two Platen Hybrid Injection Molding Machine
MODEL: BL1300DK/Z12000

Platen
Side Size



BL1300DK